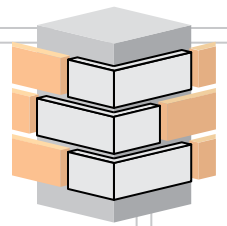




CT3

GRAPHITE CB
(W)



Corner Reference



Eco-Friendly



Fire Resistant



Low Maintenance



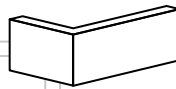
Water Resistant



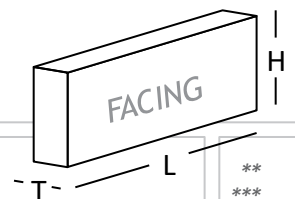
Cost Effective



Fire Resistant



Corner
available at
request



Size: L 228 X H 67 X T30 mm

Made by the traditional method which involves throwing the dot of clay in a mold box flushed with fine sand, every clod of clay that strikes the mold does so in a slightly different way which leads to a different texture for every brick. A mix of various natural oxides is gently slipped on the surface to create a charming aged look

especially resembling architecture at the beginning of the industrial age in Europe.

This is not an imitation tile which tries to imitate the brick look, this is an absolute brick in the form factor of a tile crafted to perfection by the most sophisticated technologies and the skill of human hand.

- *Antique weathered look*
- *Random textures*
- *Rustic appeal*
- *Beautiful color variations*
- *Easy to clean and maintain*



*Specifications:

Weight: 0.8 Kg

Water absorption: < 12%

Coverage per sq.ft. (10mm joint):

1 sq.ft Wall - 5.1 pcs.

1 m² - 55 pcs.

*Specifications are indicative, buyers are requested to undertake tests in accredited laboratories to verify suitability of bricks for particular application.

**Individual bricks may vary dimensionally this is natural characteristic of fired clay products and is catered for in relevant Indian Standard.

***Dimensions are subject to change without prior notice, before ordering/designing buyers are encouraged to inquire about prevailing sizes and quantities available.